

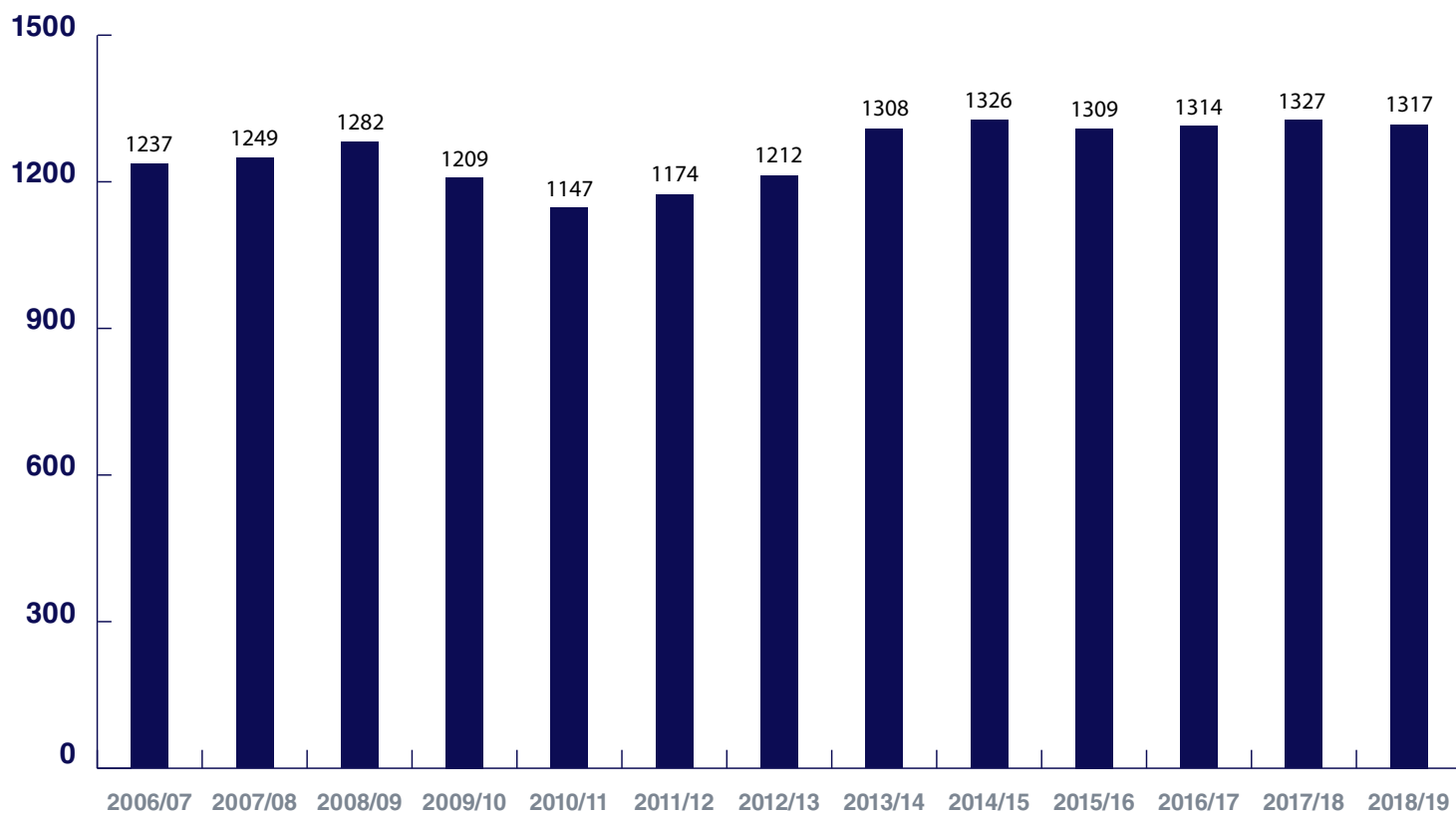


Annual Reporting

Academic Year 2018-2019

Learning **together**
inspiring **success**

Student Numbers



(Student numbers exclude those children in our Early Childhood Centre.)



Operating Costs



Remuneration and related expenses
69.93%



Educational expenses
3.77%



Conference and training expenses
0.55%



Administrative expenses
2.57%



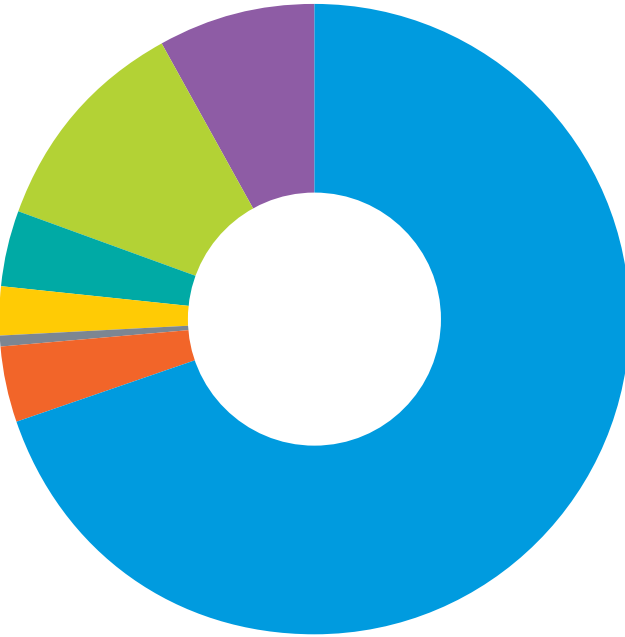
Operating expenses
3.85%



Other school service expenses
11.37%

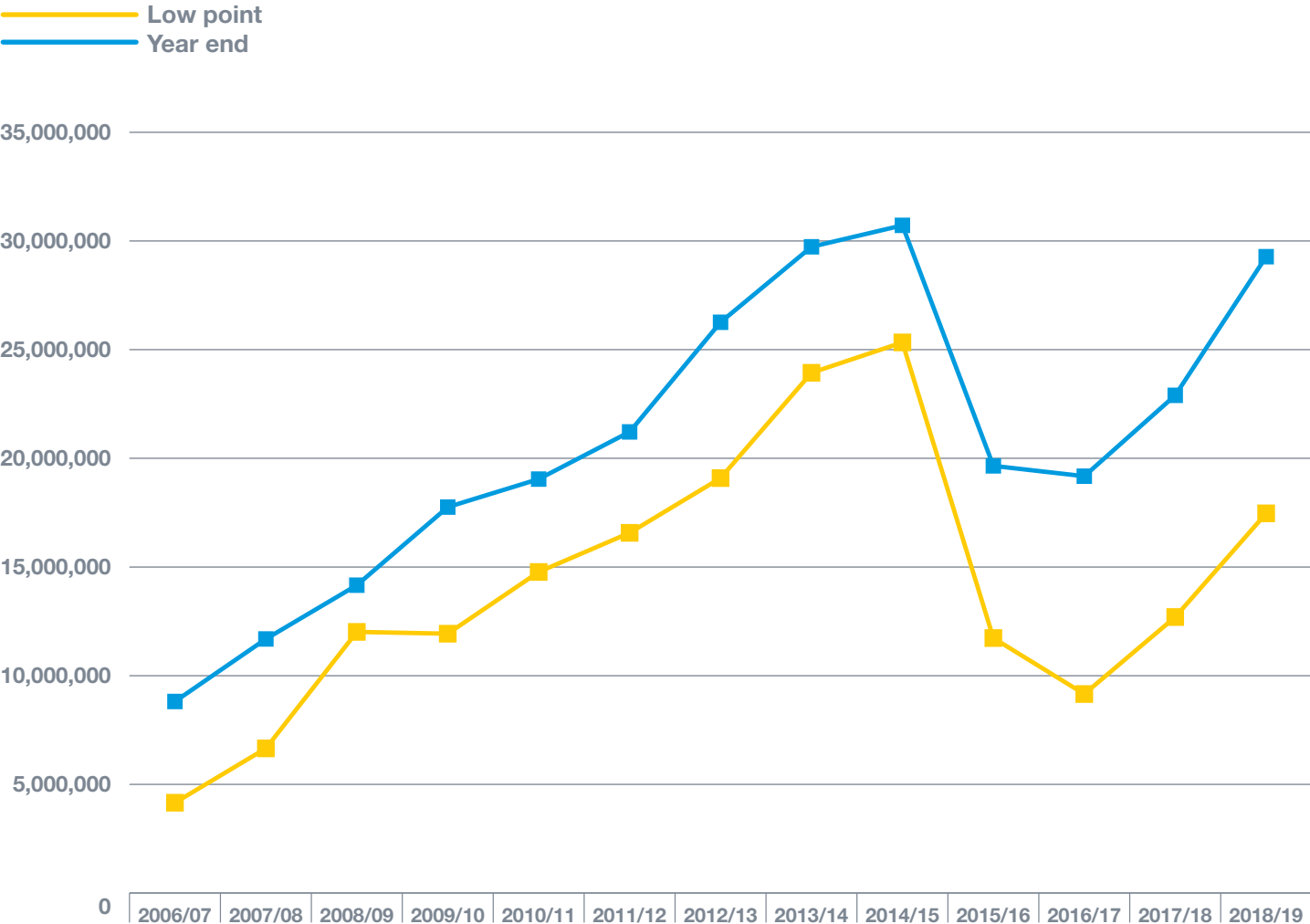


Depreciation
7.96%



Reserves

Cash and Investment Reserves

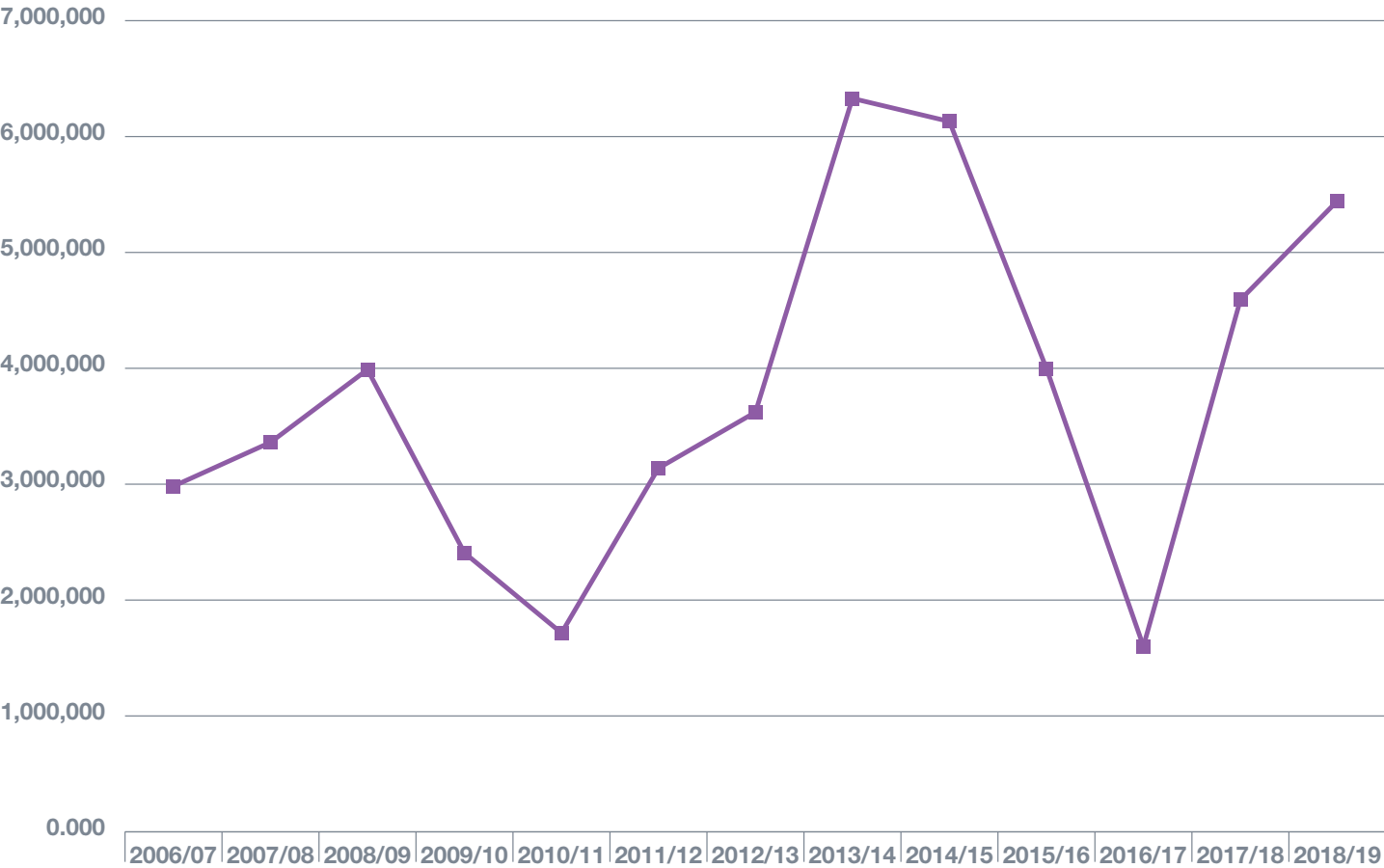


BSB opened its new Sports Centre in 2016

Profit & Loss

EBITDA

(Earnings before interest, taxes, depreciation and amortisation)



Please **click here** for the link to the Central Balance Sheet Office of the National Bank of Belgium

Exam Results



Compared to a worldwide average of 77.8%

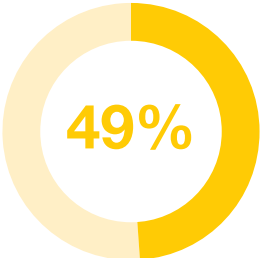


35 points

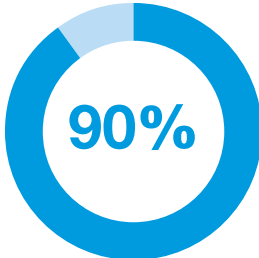
Compared to a worldwide average of 29.7



More than 25 IB subjects



of our candidates obtained 36 points or more



of our IB students obtained 30 points or more

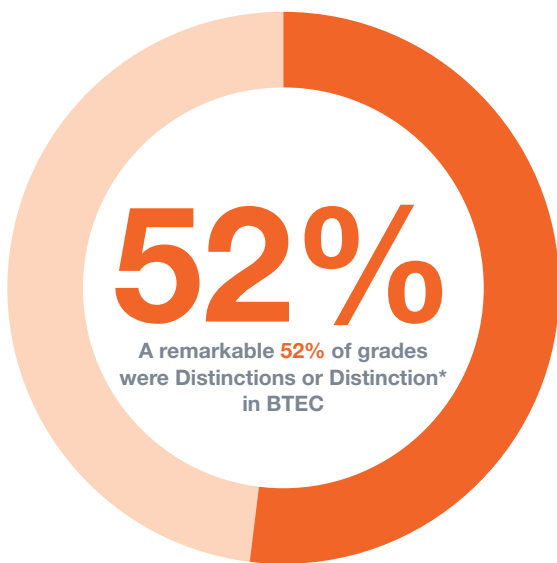


Our IB Diploma results are outstanding

Exam Results



at BTEC



A Level pass rate



pass rate for Rock School



of A Level grades at A/A* (above the national level of 26.2%)

GCSE - Remarkably, 55% of grades were at at 7-9 (A-A*), with 93% of grades at 4-9 (C-A*).

Exam Results

Comparison of examination results 2019

GCE A Level %		
	UK National Average	BSB
Grades	2019	2019
A*	7.7	9.8
A*-A	25.2	30.8
A*-B	52.7	62.4
A*-E	97.6	99.2

()GCSE %		
	UK National Average	BSB
Grades	2019	2019
9	4.5	20.3
9-8	10.9	38.2
9-7	20.8	55
9-4	67.3	92.6

International Baccalaureate Diploma														
	BSB 2008	BSB 2009	BSB 2010	BSB 2011	BSB 2012	BSB 2013	BSB 2014	BSB 2015	BSB 2016	BSB 2017	BSB 2018	BSB 2019	BSB 10 yr average	Worldwide 2019
Percentage Pass Rate	88.2	97	92.6	87.9	95.7	87.1	100	100	100	100	97.2	93	95	77.4
Percentage of Students with 40 or more	12.1	8.6	7.4	15.2	13.6	16.1	5.3	5.6	30	32	20	15	14	9.8
Percentage of Students with 36 or more	32.4	22.9	29.6	39.4	27.3	35.5	23.7	42	57	59	49	49	41	27.2
Percentage of Students with 30 or more	55.9	65.7	81.5	75.8	86.4	61.3	78.9	80.6	78	98	91	90	82	66.7
Mean Diploma Points Score	31.3	32	33.5	34.4	34.1	34	33	34	36	37	35	35	35	29.6
Highest Points Score	42	42	40	43	44	44	44	40	44	44	43	44	43	45

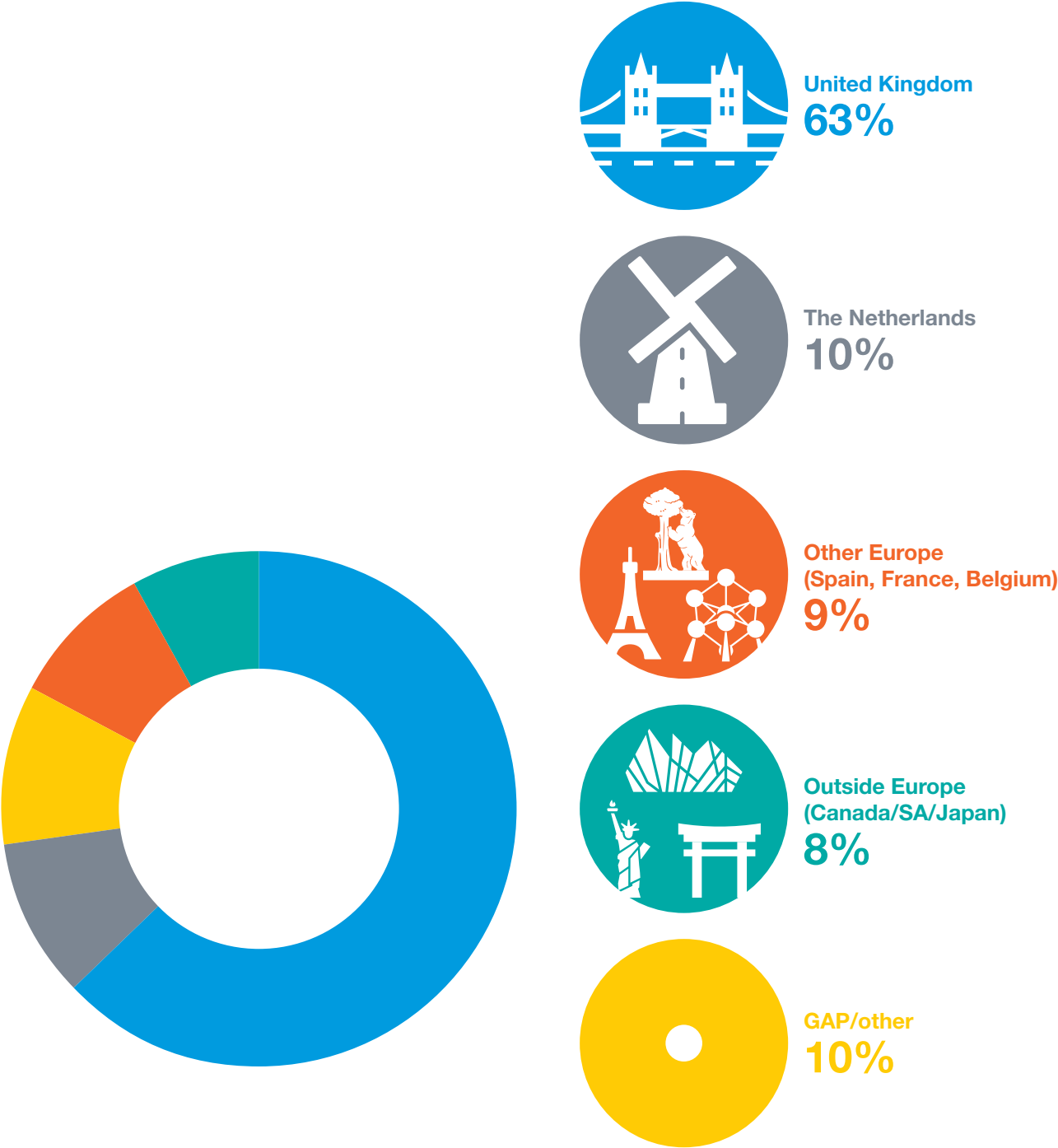
MUSIC RESULTS 2018-2019						
EXAM	ENTRIES	DISTINCTION	MERIT	PASS	FAIL	PASS RATE IN %
ABRSM* PRACTICALS						
Dec 2018	46	13	16	17	0	100
June 2019	89	17	38	34	0	100
TOTAL ABRSM PRACTICAL	135	30	54	51	0	100
ABRSM THEORY						
Nov 2018	4	1	2	1	0	100
Mar 2019	1	0	1	0	0	100
June 2019	6	2	2	2	0	100
TOTAL ABRSM THEORY	11	3	5	3	0	100
ROCK SCHOOL March 2019	25	6	16	3	0	100

*ABRSM = Associated Board of the Royal Schools of Music

Drama Results 2019					
EXAM	ENTRIES	PASS WITH DISTINCTION	PASS WITH MERIT	PASS	PASS RATE IN %
LAMDA*	32	21	8	3	100

*London Academy of Music and Dramatic Art

Leavers and their destinations



Universities include: Amsterdam (UvA), Bath, Birmingham, Bristol, Cambridge, Concordia, Delft, Durham, Eindhoven, IE, Imperial College London, Leeds, Leiden, Loughborough, LSE, Manchester, Maastricht, Nagoya, Oxford, St Andrews, Surrey, University College London, Vrije Universiteit Brussel, Warwick, York.