

# Annual Reporting

Academic Year 2022-2023

Learning together  
inspiring success

# Exam Results



at IB

Compared to a worldwide average of 85.9%

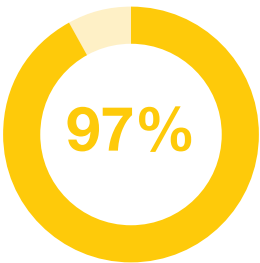


35 point  
average

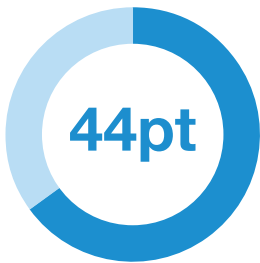
IB 3-Year average



More than 25 IB subjects



of our candidates obtained  
30 points or more



Our highest student IB score  
(the highest score possible)

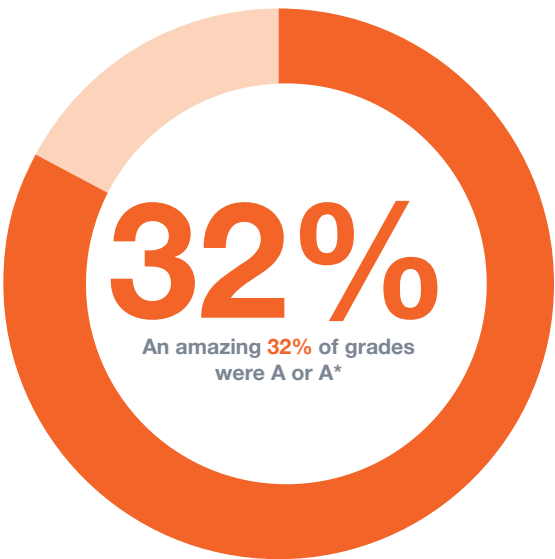


Our IB Diploma results are outstanding

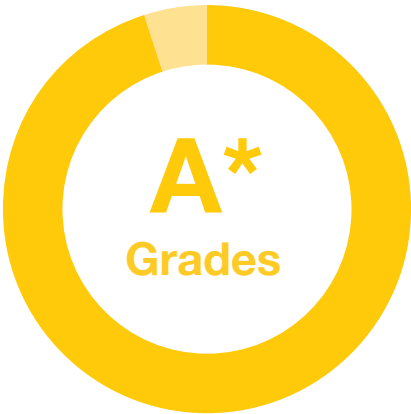
# Exam Results



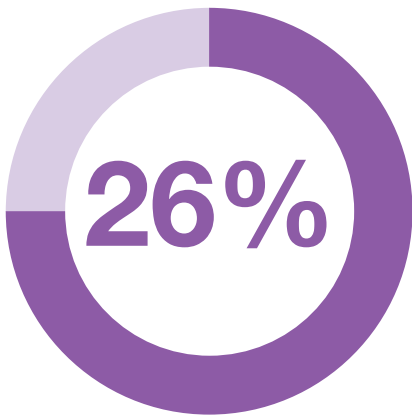
at A Level



BTEC pass rate



7 students achieved three A\* grades



of A Level grades at A\*

GCSE: 92% of all GCSE grades awarded were grade 4 or above. 46% were Distinction or higher.

# Exam Results

## Comparison of examination results 2023

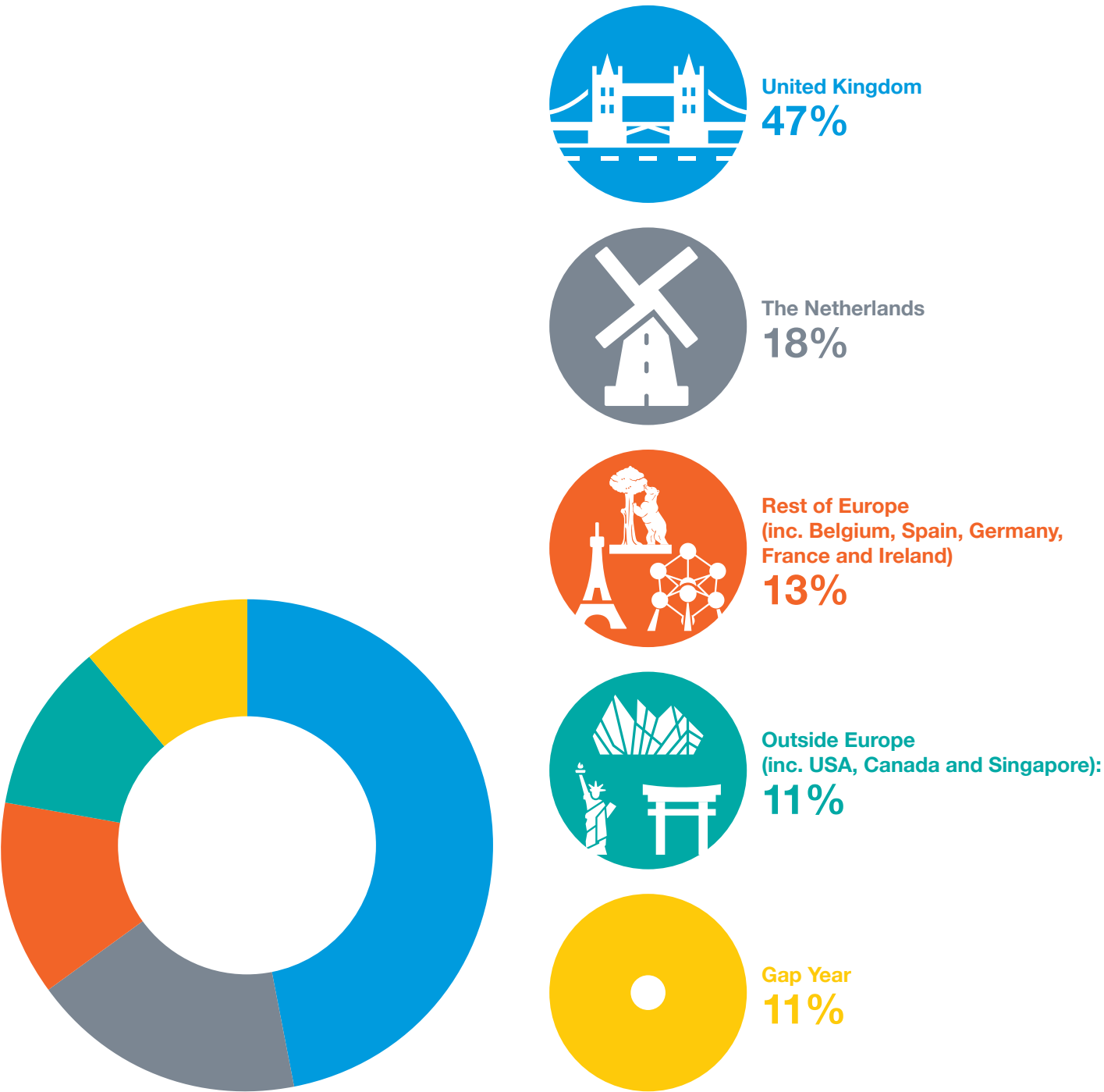
GCE A Level %											(I)GCSE %												
A-LEVEL RESULTS		2019	2020	2021	2022	2023	2019 UK National Average	2020 UK National Average	2021 UK National Average	2022 UK National Average	2023 UK National Average	(I)GCSE RESULTS		2019	2020	2021	2022	2023	2019 UK National Average	2020 UK National Average	2021 UK National Average	2022 UK National Average	2023 UK National Average
A*-A	BSB	31%	43%	45%	49%	32%	7.8%	14.4%	19.1%	14.6%	25.4%	9/A*	BSB	20%	31%	26%	23%	19%	4.5%	6.3%	7.4%	6.6%	4.9%
A*-B	BSB	62%	74%	75%	70%	59%	25.5%	38.6%	44.8%	36.4%	51.6%	9-7/A*-A	BSB	55%	64%	59%	62%	50%	20.6%	25.9%	28.5%	26%	21.6%
A*-C	BSB	n/a	98%	85%	86%	79%	51.6%	66.1%	70.3%	59.7%	76%	9-4/A*-A	BSB	93%	96%	97%	97%	92%	67%	75.9%	76.9%	73%	67.8%
A*-E	BSB	100%	100%	100%	100%	99%	97.6%	99.7%	99.5%	98.4%	82.6%												

International Baccalaureate Diploma		
	BSB 3-Year average	Worldwide 2023
Number of students	49	n/a
Mean Diploma Points Score	38	30
Percentage 40+ points or more	37	8.87
Percentage 36+ points	75	19.78
Percentage 30+ points	97	26.95
Percentage Pass Rate	100	79
Highest Points Score	45	45

MUSIC AND DRAMA RESULTS 2022-2023						
ABRSM* PRACTICAL	ENTRIES	DISTINCTION	MERIT	PASS	FAIL	PASS RATE IN %
December 2022	13	4	2	7	0	100%
March 2023	8	2	2	4	0	100%
June 2023	26	8	9	9	0	100%
TOTAL ABRSM PRACTICAL	47	14	13	20	0	100%
ABRSM THEORY	ENTRIES	DISTINCTION	MERIT	PASS	FAIL	PASS RATE IN %
December 2022	1	0	0	1	0	100%
March 2023	2	1	1	0	0	100%
June 2023	2	2	0	0	0	100%
TOTAL ABRSM PRACTICAL	5	3	1	1	0	100%
ROCK SCHOOL	ENTRIES	DISTINCTION	MERIT	PASS	FAIL	PASS RATE IN %
March 2023	30	11	16	3	0	100%
LAMDA**	ENTRIES	DISTINCTION	MERIT	PASS	FAIL	PASS RATE IN %
Feb 2023	30	5	20	0	5	83%

\*ABRSM = Associated Board of the Royal Schools of Music  
\*\*London Academy of Music and Dramatic Art

# University Destinations



Universities include: Imperial College London; University of St Andrews; University of Amsterdam; McGill University; University of British Columbia; Edinburgh Napier University, University of Oxford; Eindhoven University of Technology; London School of Economics and Political Science; Concordia University, Montreal; Nanyang Technological University, Singapore.

# Student Numbers





# Operating Costs



Remuneration and related expenses  
**71.37%**



Other school service expenses  
**10.95%**



Depreciation  
**6.29%**



Operating expenses  
**4.69%**



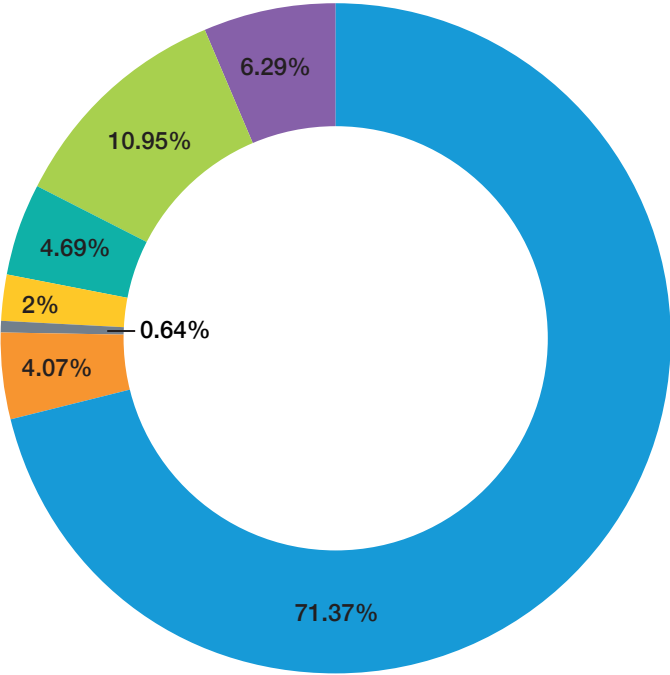
Educational expenses  
**4.07%**



Administrative expenses  
**2%**

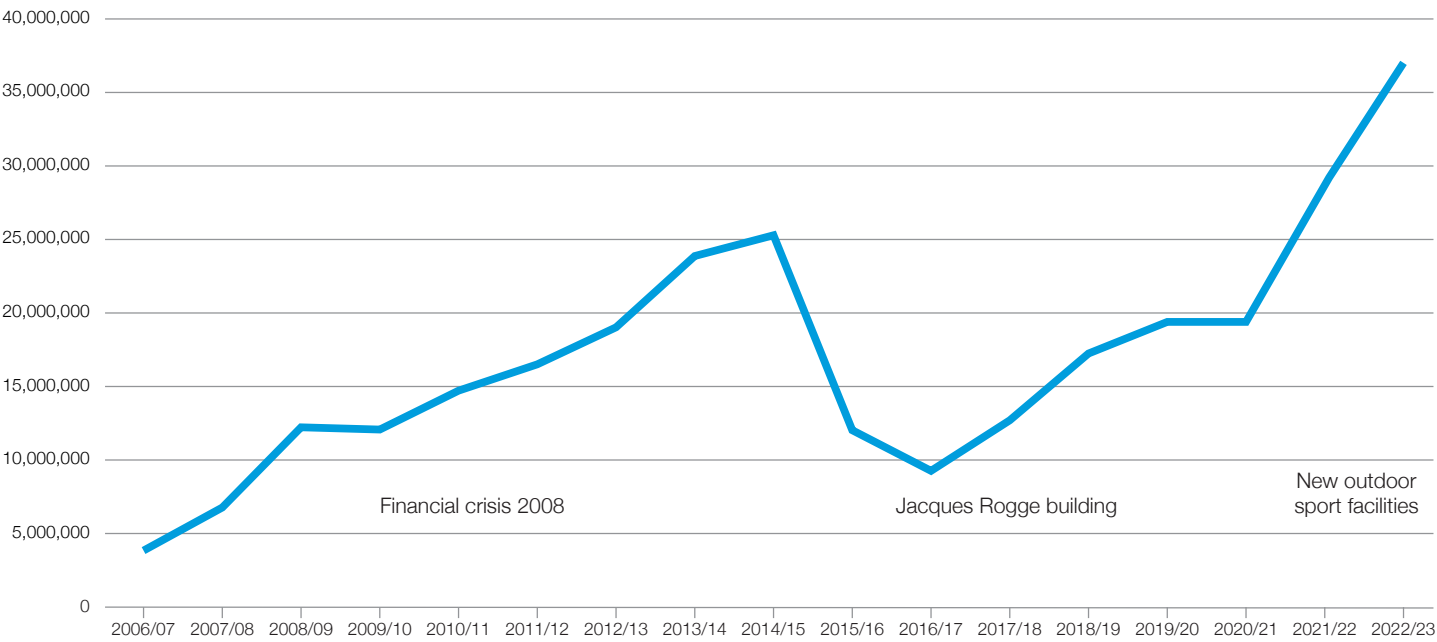


Conference and training expenses  
**0.64%**



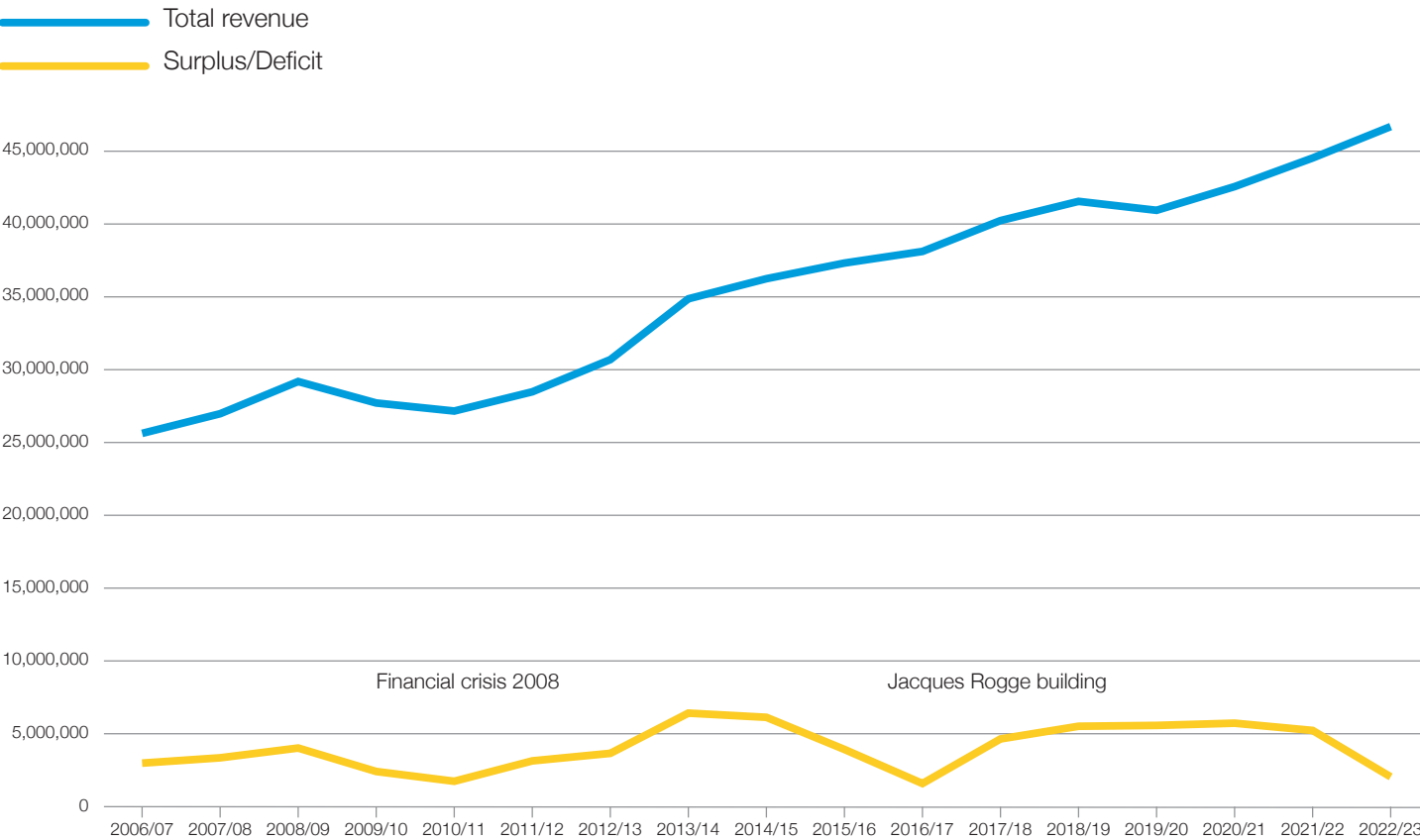
- Remuneration and related expenses
- Educational expenses
- Conference and training expenses
- Administrative expenses
- Operating expenses
- Other School service expenses
- Depreciation

# Cash and Investments





# Revenue





**An international learning community**

**The British School of Brussels vzw**

**Pater Dupierreuxlaan 1, 3080 Tervuren, Belgium**

**Tel: +32 (0)2 766 04 30 – Fax: +32 (0)2 767 80 70**

**[www.britishschool.be](http://www.britishschool.be)**

**Email: [admissions@britishschool.be](mailto:admissions@britishschool.be)**



**Learning together  
inspiring success**